

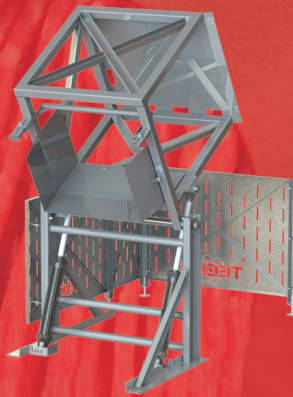
RANK	NAME OF COMPANY Location Chief Officer, Title	net sales (millions)	No. of plants	Number of employees	OPERATIONS																			
					Beef Slaughter	Boxed Beef	Beef Further Processing	Ground Beef	Pork Slaughter	Fresh Pork	Fresh Sausage	Cured Sausage	Ham	Deer Meat	Bacon	Poultry Slaughter	Poultry Further Processing	Veal	Lamb	Game	Seafood	Prepared Foods	Portion Control	Case-Ready
1 2015 : 1	Tyson Foods Inc. Springdale, Ark. Donnie Smith, President/CEO	40,600	100	113,000	✓	✓	✓	✓	✓	✓	✓	✓	✓	✓	✓				✓	✓	✓	✓	✓	✓
2 2015 : 2	JBS USA Holdings Inc. Greeley, Colo. Andre Nogueira, President/CEO	33,680 (EFR)	44	73,000	✓	✓	✓	✓	✓			✓	✓		✓				✓	✓	✓	✓	✓	✓
3 2015 : 3	Cargill Meat Solutions Corp. Wichita, Kan Jody Horner, President	23,000	30	26,800	✓	✓	✓	✓	✓	✓	✓	✓	✓							✓	✓	✓	✓	✓
4 2015 : 5	Smithfield Foods Inc. Smithfield, Va. C. Larry Pope, President/CEO	14,000	54	50,236	✓	✓	✓	✓	✓	✓	✓	✓	✓	✓					✓	✓		✓	✓	✓
5 2015 : 6	Hormel Foods Corp. Austin, Minn. Jeffrey M. Ettinger, Chairman/CEO	9,300	43	20,700		✓	✓	✓	✓	✓	✓	✓	✓	✓					✓	✓	✓	✓	✓	✓
6 2015 : 7	National Beef Packing Co. LLC Kansas City, Mo. Tim Klein, CEO	7,400	5	8,000	✓	✓	✓	✓												✓		✓	✓	✓
7 2015 : 8	ConAgra Foods Inc. (Consumer Foods) Omaha, Neb. Gary Rodkin, CEO	7,304 (EFR)	32	36,000					✓	✓									✓					
8 2015 : 4	SYSCO Corp. (est. sales of custom meat operations) Houston, Texas William J. DeLaney, President/CEO	7,000 (EFR)	12	1,200	✓	✓	✓	✓	✓	✓	✓	✓	✓	✓	✓			✓	✓					✓
9 2015 : 10	Perdue Farms Inc. Salisbury, Md. James A. Perdue, Chairman	6,300 (EFR)	14	19,000								✓	✓						✓	✓		✓	✓	✓
10 2015 : 9	OSI Group LLC Aurora, Ill. Sheldon Lavin, Chairman/CEO	6,100 (EFR)	50	20,000	✓		✓	✓	✓	✓	✓	✓	✓					✓	✓	✓	✓	✓	✓	✓
11 2015 : 13	Koch Foods LLC Pack Ridge, Ill. Joseph C. Grendys, CEO	3,100 (EFR)	18	14,000								✓	✓						✓	✓		✓		✓
12 2015 : 14	Sanderson Farms Inc. Laurel, Miss. Joe F. Sanderson Jr., CEO	2,800	10	12,000+								✓	✓							✓	✓	✓	✓	✓
13 2015 : 15	Keystone Foods LLC West Conshohocken, Pa. Frank Ravndal, Jr., CEO	2,700 (EFR)	4	11,000	✓				✓		✓	✓	✓					✓					✓	✓
14 2015 : 16	Foster Farms Livingston, Calif. Ron Foster, President/CEO	2,300 (EFR)	11	12,000								✓	✓	✓					✓	✓	✓	✓	✓	✓
15 2015 : 16	American Foods Group LLC Green Bay, Wis. Greg Benedict, President/COO	2,200 (EFR)	12	NA	✓	✓	✓	✓											✓	✓	✓	✓	✓	✓

EFR: Estimated from company reports or other published data.
 DR: Company did not respond to this year's survey but has provided information within the last two years.
 EST: Sales data estimated using most recent available information.

RANK	NAME OF COMPANY Location Chief Officer, Title	net sales (millions)	No. of plants	Number of employees	OPERATIONS																			
					Beef Slaughter	Boiled Beef	Beef Further Processing	Ground Beef	Pork Slaughter	Fresh Pork	Fresh Sausage	Cured Sausage	Ham	Deer Meat	Bacon	Poultry Slaughter	Poultry Further Processing	Veal	Lamb	Game	Seafood	Prepared Foods	Portion Control	Case-Ready
46 2015 : NR	SugarCreek Packing Co. Cincinnati Ohio John G. Richardson, Owner/CEO	600	6	1,700		✓			✓		✓		✓	✓	✓		✓	✓	✓	✓	✓	✓	✓	✓
46 2015 : 46	Ruiz Food Products Inc. Dinuba, Calif. Rachel P. Cullen, President/CEO	600 (DR)	3	2,300															✓		✓			
48 2015 : 46	Lopez Foods Oklahoma City, Okla. Ed Sanchez, Chairman/CEO	540 (EST)	3	1,200		✓	✓		✓														✓	
49 2015 : 49	Stampede Meat Inc. Bridgeview, Ill. Brock Furlong, CEO, President	510 (DR)	2	1,600	✓	✓	✓						✓					✓	✓	✓	✓	✓	✓	✓
50 2015 : 43	Plumrose USA Downers Grove, Ill. Dave Schanzer, CEO	485 (EFR)	4	1,300								✓	✓	✓	✓									
51 2015 : 50	GNP Co. St. Cloud, Minn. Steve Jurek, President	467	3	1,700									✓	✓										
52 2015 : 50	FPL Food LLC Augusta, Ga. Francois Leger, President/CEO	450	2	500	✓	✓	✓	✓													✓	✓	✓	✓



METAL DETECTOR CONVEYORS



DUMPERS



AUGERS

INTEGRATE YOUR GRINDER FOR INCREASED EFFICIENCY

We can custom design a system to integrate your grinder into your product workflow, resulting in increased production and decreased operating costs.

- Augers
- Metal Detectors
- Chutes
- Mixers
- Conveyors
- Vats
- Dumpers
- And More!



CUSTOM SOLUTIONS FOR THE
FOOD PROCESSING INDUSTRY

FTIINC.ORG/GRINDING
309.774.4275

OPERATIONS

RANK	NAME OF COMPANY Location Chief Officer, Title	net sales (millions)	No. of plants	Number of employees	OPERATIONS																			
					Beef Slaughter	Boxed Beef	Beef Further Processing	Ground Beef	Pork Slaughter	Fresh Pork	Fresh Sausage	Cured Sausage	Ham	Del. Meat	Bacon	Poultry Slaughter	Poultry Further Processing	Veal	Lamb	Game	Seafood	Prepared Foods	Portion Control	Case-Ready
52 2015: 62	Rastelli Foods Group Swedesboro, N.J. Raymond Rastelli Jr.	450	2	680	✓	✓	✓	✓	✓	✓	✓	✓	✓	✓	✓	✓	✓	✓	✓	✓	✓	✓	✓	✓
52 2015: 50	Beef Products Inc./BPI Technology Inc. Dakota Dunes, S.D. Eldon Roth, President/CEO	450 (DR)	1	700	✓	✓																		
52 2015: 50	Sam Kane Beef Processors LLC Corpus Christi, Texas Lou Waters Jr., President/CEO	450 (DR)	1	750	✓	✓	✓													✓		✓	✓	
56 2015: 65	Monogram Food Solutions LLC Memphis, Tenn Karl Schledwitz, Chairman/CEO	442	7	2,500	✓					✓		✓	✓						✓	✓		✓	✓	
57 2015: 55	John Soules Foods Inc. Tyler, Texas John Soules Jr., Co-CEO	421	4	1,200	✓								✓									✓	✓	
58 2015: 56	Halpern's Purveyors of Steak and Seafood Atlanta, Ga. Howard Halpern, Chairman	405 (DR)	5	700	✓	✓	✓	✓	✓	✓	✓	✓	✓	✓	✓	✓	✓	✓	✓	✓	✓	✓	✓	✓
59 2015: 68	Dietz & Watson Philadelphia, Pa. Louis Eni, CEO	400 (EST)	3	1,000	✓					✓	✓	✓	✓	✓						✓				
59 2015: 78	The Chef's Warehouse Ridgefield, Conn. Chris Pappas, CEO	400 (EFR)	5	NA	✓															✓				
61 2015: 57	Fair Oaks Farm LLC Pleasant Prairie, Wis. Michael L. Thompson, President/CEO	377.3 (DR)	2	273	✓		✓				✓	✓												
62 2015: 62	Land O'Frost Munster, Ind. David Van Eekeren, President	365	3	1,000							✓	✓	✓											
63 2015: 60	Surlean Foods San Antonio, Texas Neal Leonard, CEO	350	4	450		✓	✓					✓							✓			✓	✓	
63 2015: 62	Colorado Premium Greeley, Colo. Kevin LaFleur, President	350	4	450	✓	✓	✓				✓	✓								✓	✓	✓	✓	
65 2015: 66	Allen Harim Foods LLC Seaford, Del. Steve Evans, CEO	336	2	1,755									✓											
66 2015: 61	Abbyland Foods Inc. Abbotsford, Wis. Harland Schraufnagel, President	332	3	990	✓	✓	✓	✓	✓	✓										✓	✓	✓		
67 2015: 67	Golden State Foods Irvine, Calif. Mark Wetterau, CEO	300 (DR)	1	180			✓																✓	

EFR: Estimated from company reports or other published data.
 DR: Company did not respond to this year's survey but has provided information within the last two years.
 EST: Sales data estimated using most recent available information.

OPERATIONS

RANK	NAME OF COMPANY Location Chief Officer, Title	net sales (millions)	No. of plants	Number of employees	OPERATIONS																			
					Beef Slaughter	Boxed Beef	Beef Further Processing	Ground Beef	Pork Slaughter	Fresh Sausage	Cured Sausage	Ham	Deli Meat	Bacon	Poultry Slaughter	Poultry Further Processing	Veal	Lamb	Game	Seafood	Prepared Foods	Portion Control	Case-Ready	Private Labeling
68 2015 : 71	Albertville Quality Foods Inc. Albertville, Ala. Jerry D. Wilson, CEO	265	2	950		✓				✓				✓						✓	✓	✓		
69 2015 : 69	Mar-Jac Poultry Inc. Gainesville, Ga Pete Martin, VP Poultry Operations	260 (EST)	1	1,200									✓	✓										
70 2015 : 72	Harrison Poultry Inc. Bridgeview, Ill. Brock Furlong, CEO, President	250 (EST)	1	900									✓											
71 2015 : 59	Bob Evans Farms Inc. New Albany, Ohio Saed Mohseni, President/CEO of Bob Evans Farms; Mike Townsley, President of BEF Foods	245	2	31,000				✓	✓	✓	✓	✓	✓											
72 2015 : 73	Tip Top Poultry Inc. Marietta, Ga. Brad Respress, CEO	237 (DR)	3	1,600	✓								✓	✓							✓	✓	✓	
73 2015 : 74	Superior Farms Davis, Calif. Rick Stott, President/CEO	232 (DR)	4	410										✓	✓					✓	✓	✓	✓	✓
74 2015 : NR	Capitol Wholesale Meats dba Fontanini McCook, Ill. Gene Fontanini, CEO	231	1	503	✓				✓	✓														✓

Nothing But Good Choices
on This Ballot!

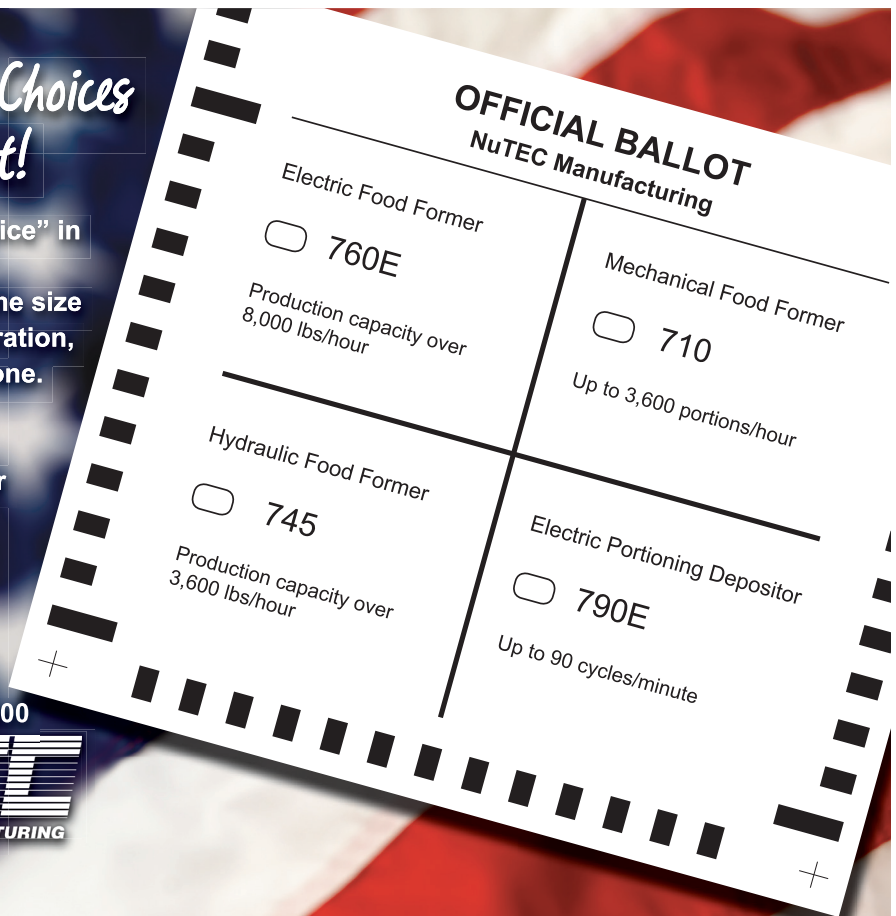
NuTEC is the "people's choice" in food forming and portion depositing. Regardless of the size of the food processing operation, we have a choice for everyone.

With options that include Ultimate Fill, NuTECtured or Standard Fill Systems and accessories that interchangeably fit all sizes of equipment, we are your front-runner in 2016!

Call us today –(815)722-2800



www.nutecmfg.com



OPERATIONS

RANK	NAME OF COMPANY Location Chief Officer, Title	net sales (millions)	No. of plants	Number of employees	OPERATIONS																		
					Beef Slaughter	Boxed Beef	Beef Further Processing	Ground Beef	Pork Slaughter	Fresh Sausage	Cured Sausage	Ham	Deli Meat	Bacon	Poultry Slaughter	Poultry Further Processing	Veal	Lamb	Game	Seafood	Prepared Foods	Portion Control	Case-Ready
75 2015 : 82	Mountain States Rosen Greeley, Colo. Dennis Stiffler, CEO	220	2	300		✓	✓		✓							✓	✓		✓	✓	✓	✓	✓
76 2015 : 81	BrucePac Woodburn, Ore. Glen Golomski, President/CEO	211	3	740		✓					✓		✓				✓	✓	✓	✓	✓	✓	✓
77 2015 : 76	Specialty Foods Group Inc. Owensboro, Ken. Steven P. Wright, President	207 (DR)	1	530					✓		✓	✓	✓								✓		
78 2015 : 77	Marcus Food Co. Wichita, Kan. Howard Marcus, CEO	205 (DR)	NA	24	✓	✓	✓				✓	✓					✓			✓	✓		
79 2015 : 69	Dakota Provisions LLC Huron, S.D. Kenneth Rutledge, President/CEO	200	1	800							✓	✓	✓	✓				✓	✓		✓		
79 2015 : 84	Strauss Brands Inc. Franklin, Wis. Randy Strauss, CEO/Co-Pres.; Tim Strauss, Co-Pres.	200	1	285											✓	✓				✓	✓	✓	✓
79 2015 : 78	Columbus Mfg. Inc. Hayward, Calif. Joe Ennen, President/CEO	200 (EST)	3	300		✓		✓	✓	✓		✓								✓	✓	✓	
82 2015 : 88	Lincoln Provision Inc. Chicago, Ill. Jim Stevens, President	198	2	95	✓	✓	✓												✓		✓	✓	✓
83 2015 : 80	Overhill Farms Vernon, Calif. James Rudis, President/CEO	194 (EST)	2	700		✓									✓			✓	✓	✓			
84 2015 : 83	Rose Packing Co. Barrington, Ill. Dwight Stiehl, President	181 (DR)	1	500					✓	✓	✓	✓										✓	
85 2015 : 86	J.H. Routh Packing Co. Sandusky, Ohio Thomas M. Routh, President/CEO	166 (EST)	1	300					✓	✓	✓	✓	✓						✓		✓		
86 2015 : 87	Maple Leaf Farms Milford, Ind. Terry Tucker, CEO	161 (EST)	4	750									✓	✓				✓				✓	
87 2015 : 88	Eddy Packing Co. Inc. Yoakum, Texas Hans-Peter Ryholt, President	160 (DR)	1	500	✓				✓	✓	✓	✓	✓					✓		✓	✓	✓	✓
88 2015 : 95	JTM Provision Inc. Harrison, Ohio Tony Maas, President	152	1	420		✓									✓				✓		✓		
89 2015 : 88	Marcho Farms Inc. Souderton, Pa. Brian D. Friesen, President	150 (EST)	1	250													✓	✓		✓	✓	✓	✓

EFR: Estimated from company reports or other published data.

DR: Company did not respond to this year's survey but has provided information within the last two years.

EST: Sales data estimated using most recent available information.

OPERATIONS

RANK	NAME OF COMPANY Location Chief Officer, Title	net sales (millions)	No. of plants	Number of employees	OPERATIONS																					
					Beer Slaughter	Boxed Beef	Beer Further Processing	Ground Beef	Pork Slaughter	Fresh Pork	Fresh Sausage	Cured Sausage	Ham	Deer Meat	Bacon	Poultry Slaughter	Poultry Further Processing	Veal	Lamb	Game	Seafood	Prepared Foods	Portion Control	Case-Ready	Private Labeling	Export
90 2015: 91	Jensen Meat Co. San Diego, Calif. Abel Olivera, CEO	145	1	350		✓																				
91 2015: 91	Kayem Foods Inc. Chelsea, Mass. Matt Monkiewicz, President/CEO	140 (EST)	2	600																						
92 2015: 94	Bridgford Foods Corp. Anaheim, Calif. William L. Bridgford, Chairman	133 (DR)	3	500																						
93 2015: 97	Peer Food Group Inc. Chicago, Ill. Larry O'Connell, President	130	2	400																						
94 2015: 96	Williams Sausage Co. Union City, Tenn. Roger Williams, President	128	1	550																						
95 2015: NR	Vincent Giordano Corp. Philadelphia Pa. Guy Giordano, CEO	125	2	105		✓																				
96 2015: 98	ALL Holding Co. LLC Harleysville, Pa. Jim Van Stone, President/CEO	116	2	281		✓																				

Spotlight on the FDA-Approved Outer Wrap
That Out-Performs All Others!

PPI's Outer Wrap completely encapsulates our patty paper, protecting it from contaminants.
No Cardboard. No Paper Tape. No Problems.

SELECT GRADE
FDA-APPROVED PAPERS

Patty Paper Inc. (PPI) manufactures a wide variety of select grade papers that are FDA-approved for use in the meat, dairy, bakery, deli, snack and grocery industries. Converted papers include patty interleaving, cheese slice interleaving, picking paper, bulker or roll stock paper and sheeted waxed paper or peach/pink, green and black steak paper. They also have butcher paper sheets and rolls. All sheets feature consistent feed-ability for uninterrupted sheeting. The way PPI packages their product also differentiates the company in the food safety area. The first company to recognize the potential hazards in using non FDA-approved strings, cardboard or paper tapes, PPI provides a patented FDA-approved paper packaging system. Fully wrapped packages keep each stack of interleaving paper clean and sanitary until it is used for interleaving. This packaging system protects individual sheets from environmentally introduced contamination.

800-782-1703 www.pattypaper.com



PPI
800-782-1703
www.pattypaper.com

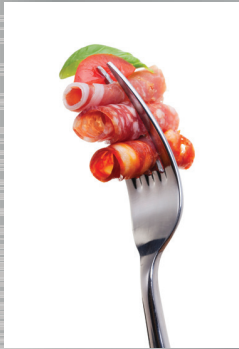


PORK

Company	Sales in Sector (in millions)	Overall Sales (in millions)
Smithfield Foods Inc.	13,580	14,000
Tyson Foods Inc.	4,466	40,600
Seaboard Foods	1,333	1,333
Indiana Packers Corp.	1,200	1,200
SugarCreek Packing Co.	456	600
Golden West Food Group	265.2	680
Abbyland Foods Inc.	232.4	332
Monogram Food Solutions LLC	212.2	442
Capitol Wholesale Meats	207.9	231
Cooper Farms	190.5	635
Land O'Frost	164.3	365
West Liberty Foods LLC	139.5	775
Williams Sausage Co. Inc.	128	128
Sunnyvalley Smoked Meats	81.8	82
Peer Food Group Inc.	58.5	130

CHICKEN

Company	Sales in Sector (in millions)	Overall Sales (in millions)
Tyson Foods Inc.	10,962	40,600
Sanderson Farms Inc.	2,800	2,800
Mountaire Farms Inc.	2,057	2,057
House of Raeford Farms Inc.	1,330	1,330
Fieldale Farms Corp.	1,000	1,000
George's Inc.	1,000	1,000
Simmons Prepared Foods	833.5	833.5
Case Foods Inc.	826	826
GNP Co.	467	467
John Soules Foods	336.8	421
Allen Harim Foods LLC	336	336
AdvancePierre Foods	275.4	1,620
Albertville Quality Foods Inc.	235.9	265
Golden West Food Group	170	680
West Liberty Foods LLC	139.5	775



Some Metal Goes Great With Food

Bunting. Because Other Metals Don't.

Whether food processing or packaging, get the metal out of your food with Bunting® metal detectors and separation equipment. Our strong, high-energy magnets, quality manufacturing and innovative designs protect your product and your reputation making using anyone else, well, hard to swallow.



quickTRON™ 07 Gravity Style Metal Detector

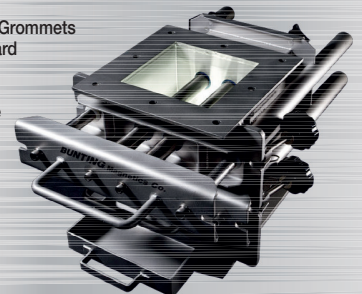
Detects all metals whether loose or encapsulated.

- Patented powerLINE™ technology lets product flow closer to the coil, allowing for optimal sensitivity and detection.
- Advanced electronics feature color touch-screen controls, USB interface and revolutionary imaging software.
- Bell housing reject is easy to clean and remove.

HF Series Drawer Magnet

Featuring Industry's Only Metal Detectable Grommets & Gaskets

- Ceramic and High-Intensity Rare Earth Magnets are available.
- **New!** Metal Detectable Grommets & Gaskets come standard
- Food, Sanitary, 3A and USDA finishes available



To see our complete line, call or click

BUNTING Magnetics Co.

The Leader In Moving, Removing & Holding Metal For Over 50 Years

(800) 835-2526
buntingmagnetics.com

©2016 Bunting Magnetics Co.